



INSTRUCTION BULLETIN

No. 9012975
Machine: T17 / M17
Published: 05-2016
Rev. 01

NOTE: DO NOT DISCARD the Parts List from the Instruction Bulletin. Place the Parts List in the appropriate place in the machine manual for future reference. Retaining the Parts List will make it easier to reorder individual parts and will save the cost of ordering an entire kit.

NOTE: Numbers in parenthesis () are reference numbers for parts listed in Bill of Materials.

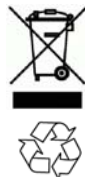
Installation instructions for **kit number 9020109**

SYNOPSIS:

This kit contains the parts needed to install a strobe light kit onto T17 scrubbers / M17 sweeper- scrubbers.
Please follow step-by-step instructions.

SPECIAL TOOLS / CONSIDERATIONS: NONE

(Estimated time to complete: 2 hours)



PROTECT THE ENVIRONMENT

Please dispose of packaging materials, used machine components such as batteries and fluids in an environmentally safe way according to local waste disposal regulations.

Always remember to recycle.

PREPARATION:

1. Park the machine on a clean level surface, turn off the machine, set the parking brake, and remove the key.

FOR SAFETY: Before leaving or servicing machine, stop on level surface, turn off machine, set parking brake, and remove key.

2. Disconnect the battery cable from the machine.



WARNING: Always disconnect battery cables from machine before working on electrical components.

INSTALLATION:

1. Remove the hole cover label from the recovery tank cover. (Fig. 1)

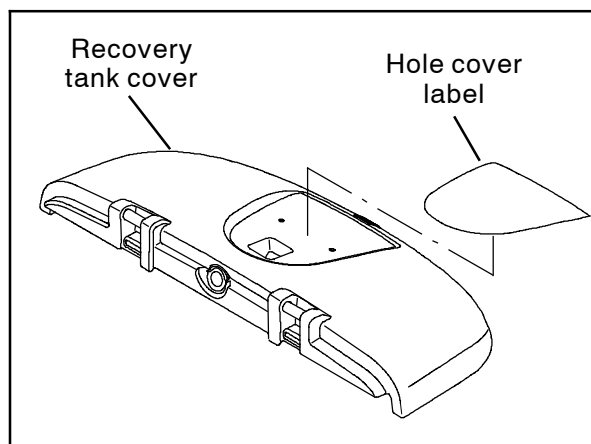


FIG. 1

- Use two pan screws (20) to install each LED light assembly (19) onto the light module cover (18). (Fig. 2)

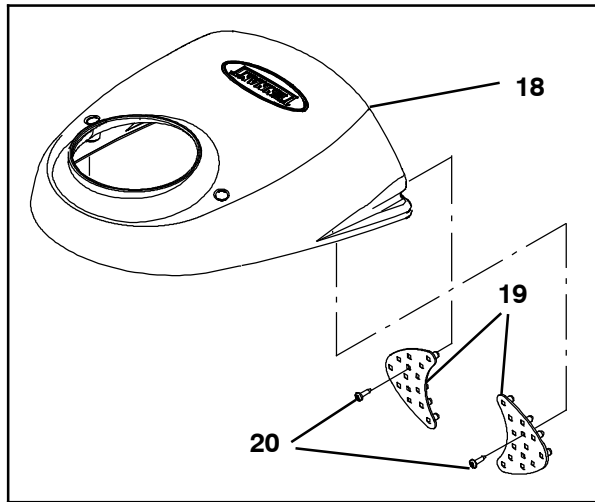


FIG. 2

- Use two M5 pan screws (14), two flat washers (15), and two M5 hex nuts (16) to install the strobe light (1) onto the light module base (2). (Fig. 3)

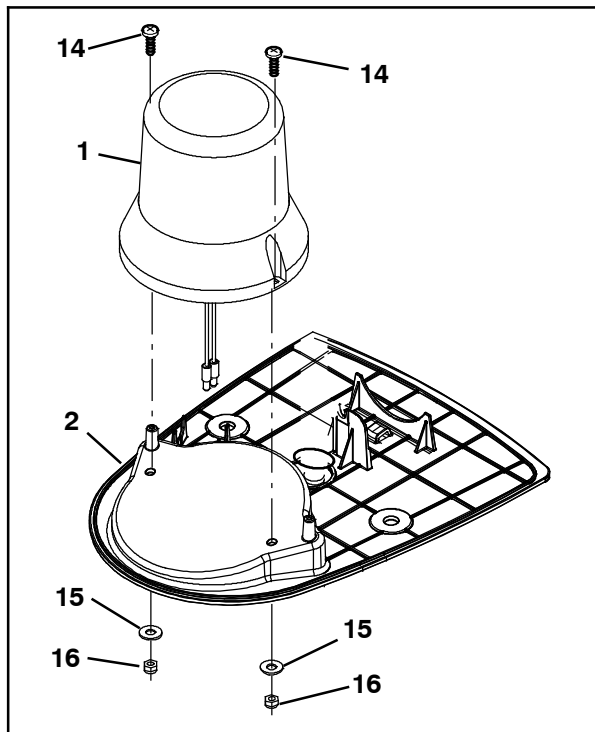


FIG. 3

- Use a cable tie (5), a hex screw (6), and a flat washer (7) to secure the backup alarm (4) to the light module base (2). (Fig. 4)

- Install the circuit breaker boot (22) onto one 2.5 Amp circuit breaker (8). (Fig. 4)

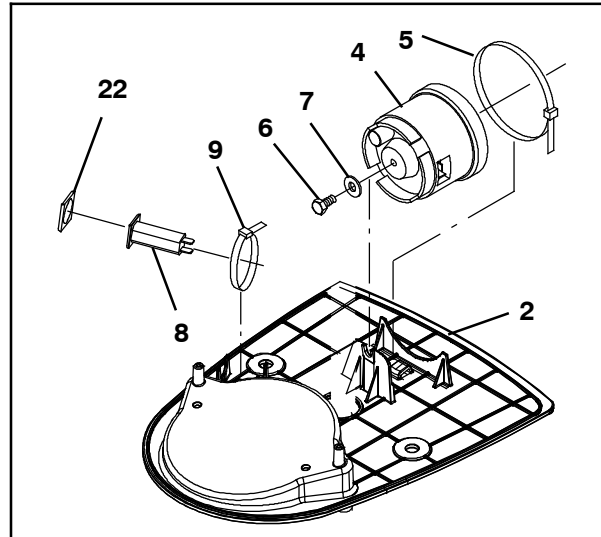


FIG. 4

- Use a cable tie (9) to secure the 2.5 Amp circuit breaker (8) from the previous step onto the light module base (2). (Fig. 4)

- Route the end of the alarm / light wire harness (10) with the single connector down through the module base (2), module base gasket (3), and into the channel in the recovery tank cover. (Fig. 5)

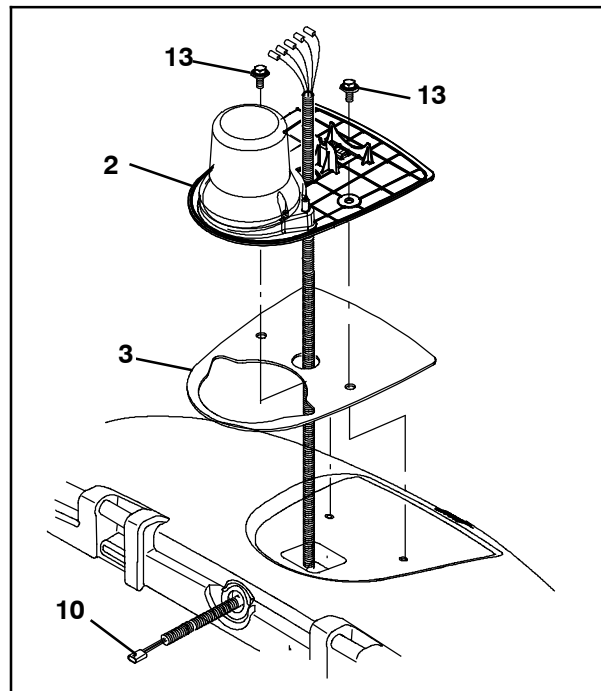


FIG. 5

- Use two M8 hex screws (13) to install the light module base (2) and module base gasket (3) onto the recovery tank cover. (Fig. 5)

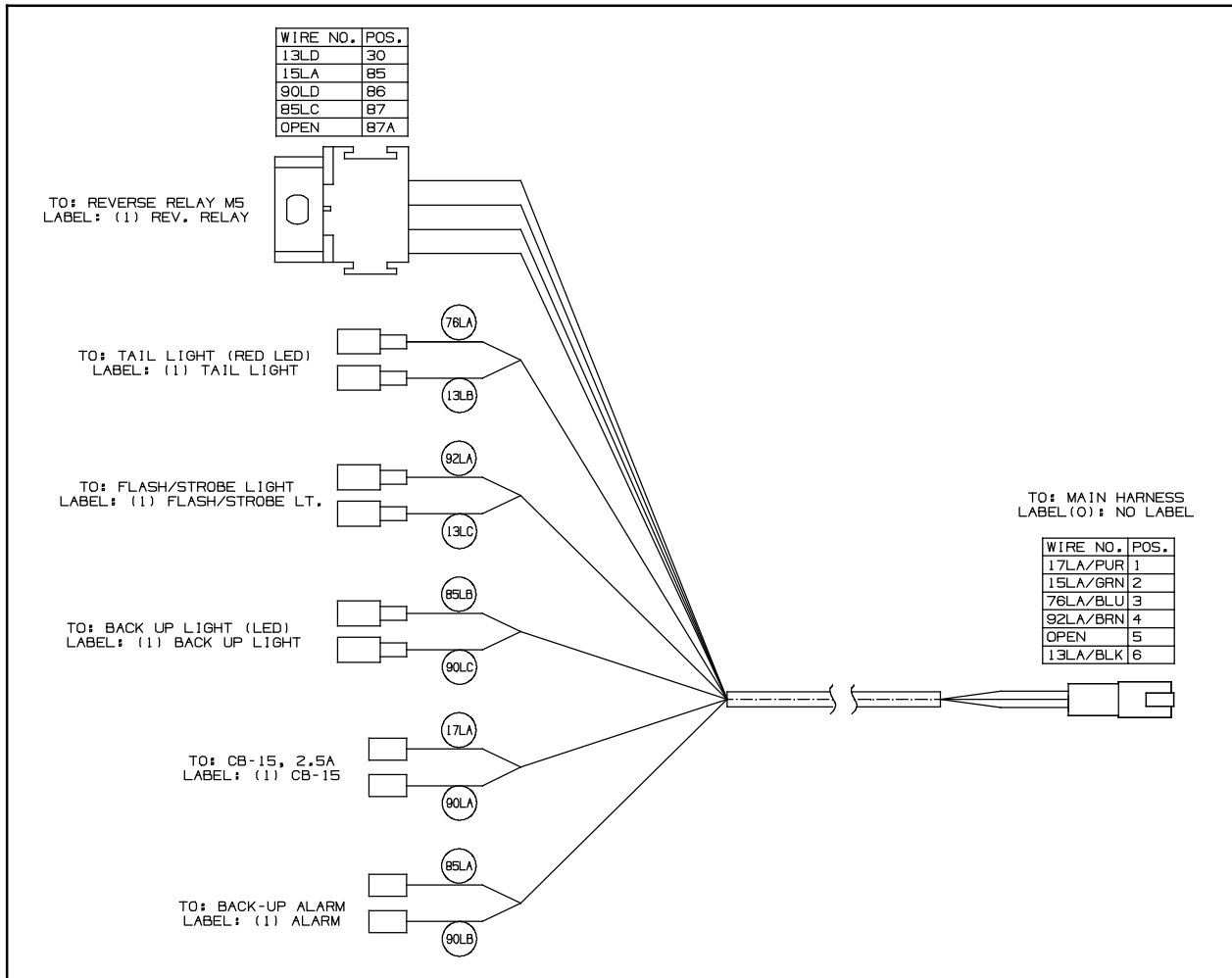


FIG. 6 - Alarm / Light Wire Harness

9. Connect the alarm / light wire harness (10) to the light (1), backup alarm (4), 2.5 Amp circuit breaker (8), and both LED light assemblies (19). (Fig. 4 / Fig. 5 / Fig. 6)
10. Plug the 36VDC relay (21) into the alarm / light wire harness (10). (Fig. 7 / Fig. 6 / Fig. 16)
11. Route the alarm / light wire harness (10) through the channel in the recovery tank cover and to the battery compartment. Connect the alarm / light wire harness to the main wire harness. (Fig. 8 / Fig. 6 / Fig. 10)

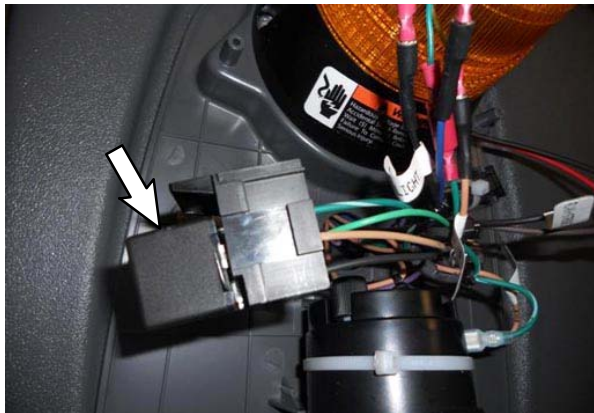


FIG. 7



FIG. 8

12. Use two pan screws (20) to install the light module cover (18) onto the rest of the light / alarm assembly. (Fig. 15)

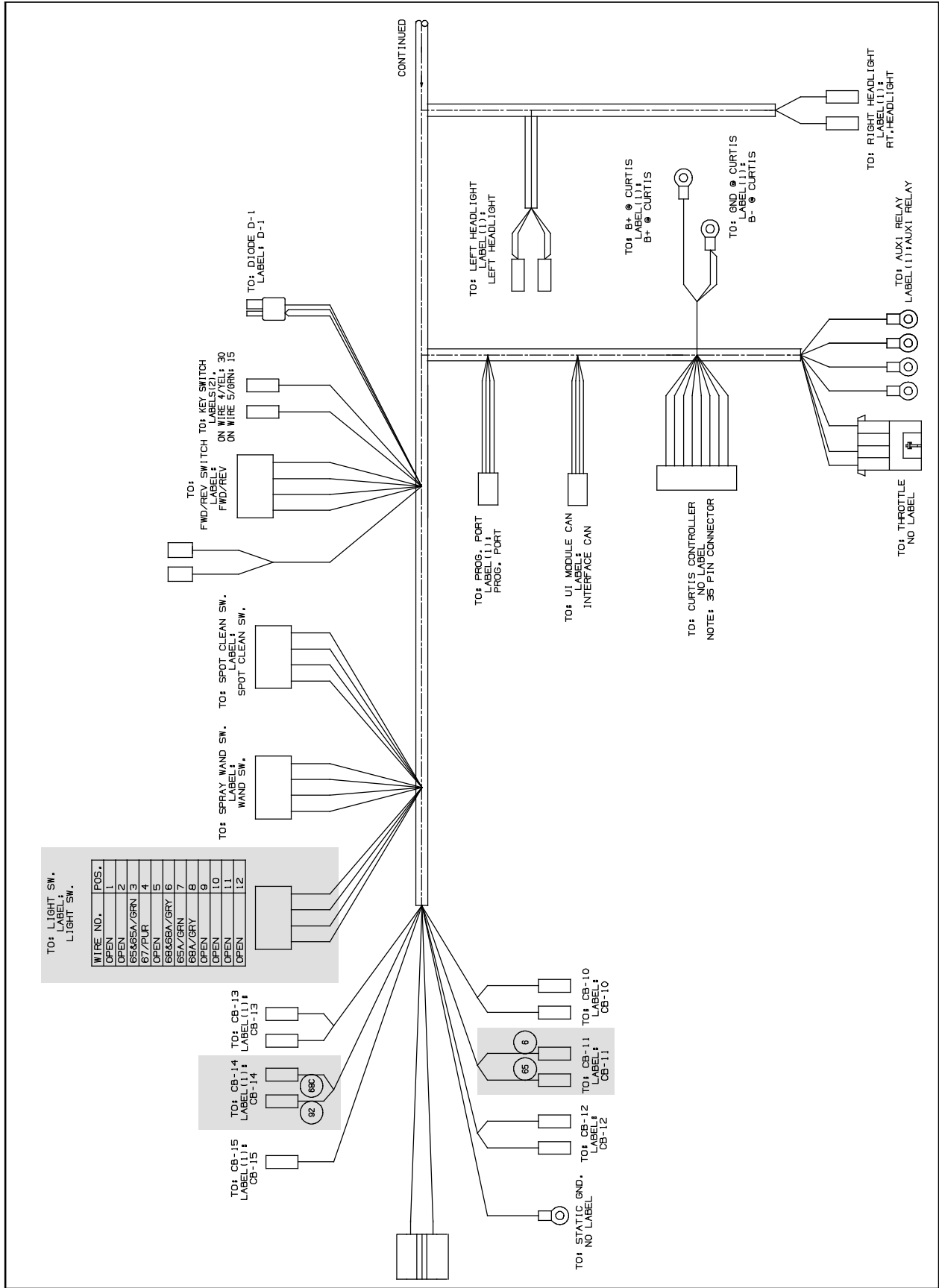


FIG. 9

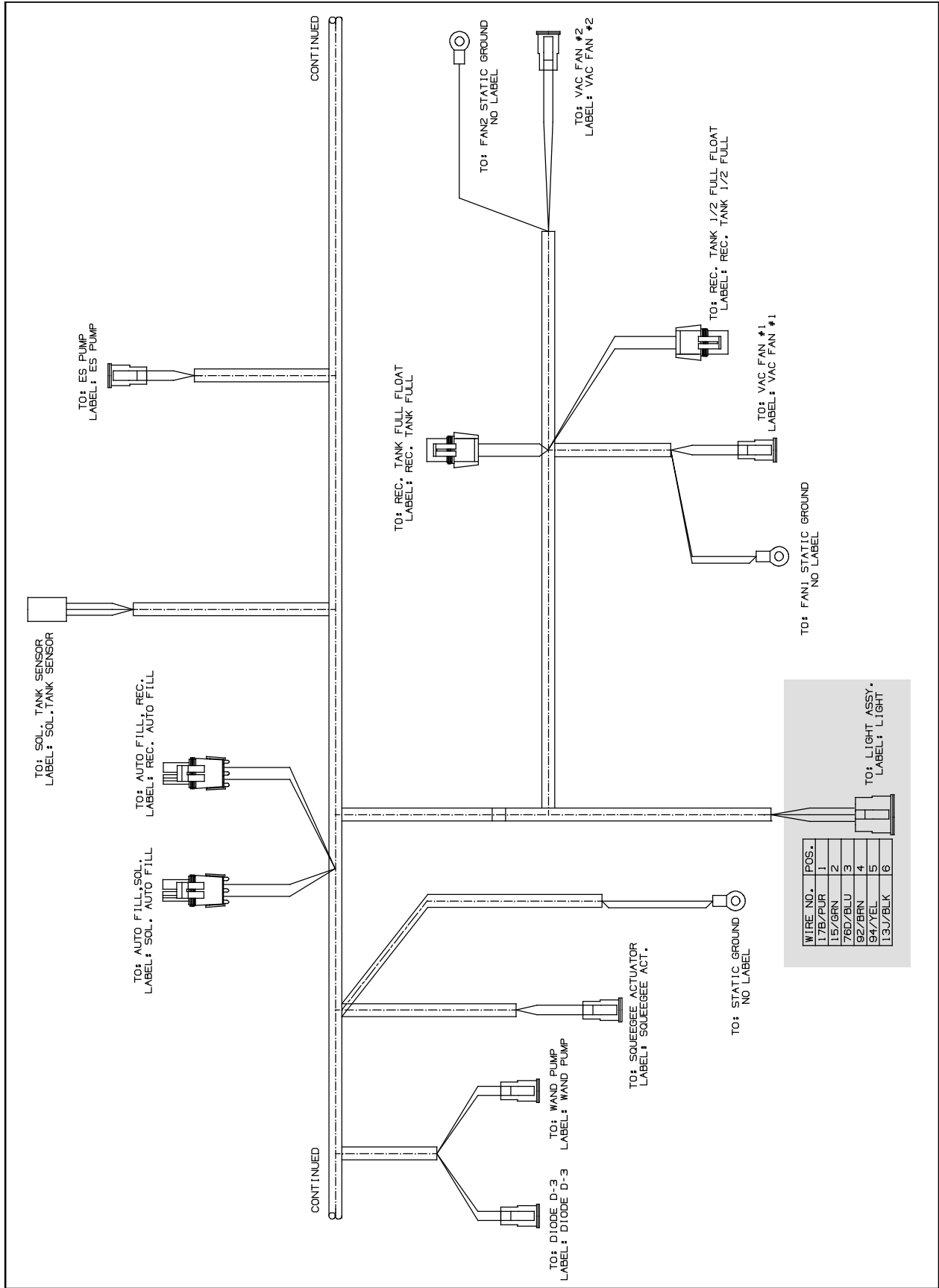


FIG. 10

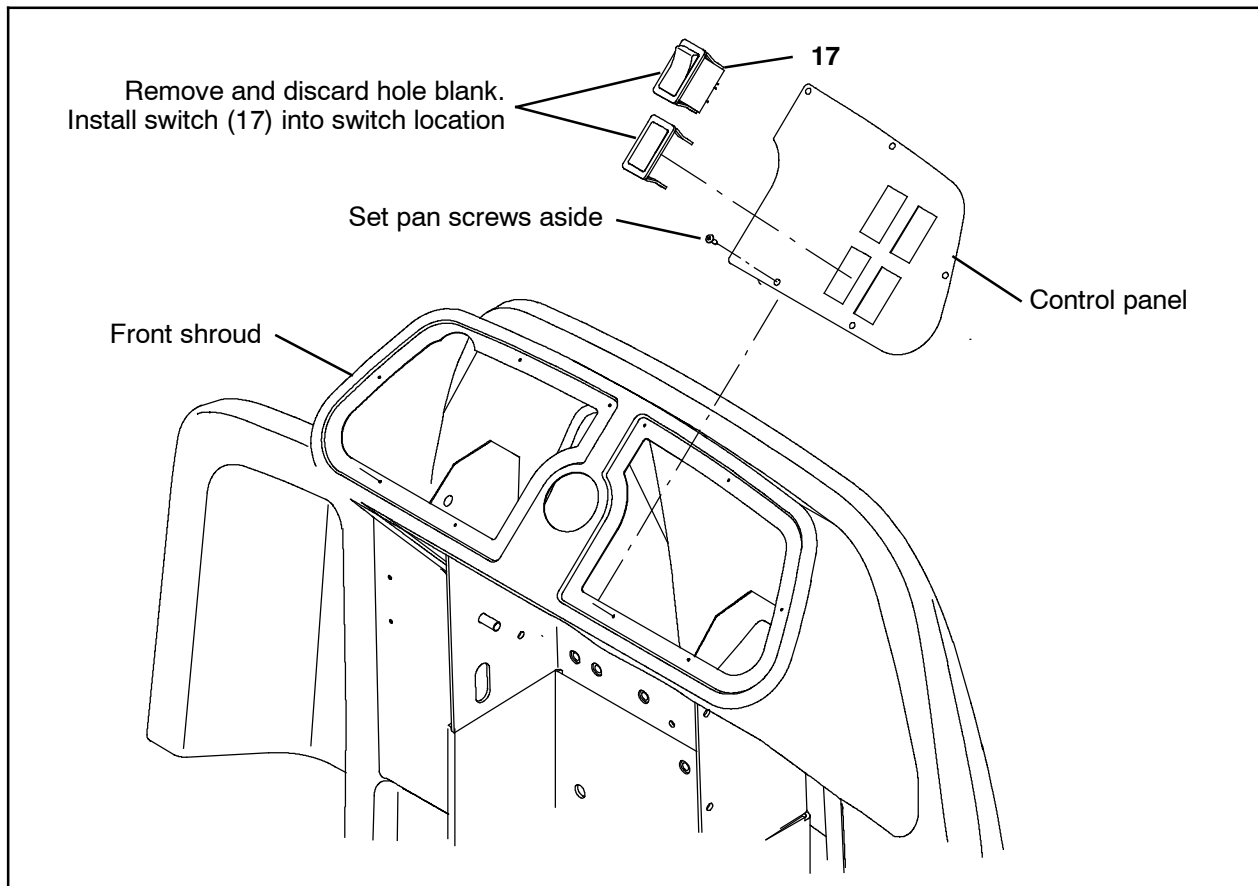


FIG. 12

NOTE: Complete Step 13 through Step 18 only if machine is not equipped with the optional front light kit. The switch (17) is already installed on machines equipped with the optional front light kit.

- 13. Remove the pan screws holding the control panel to the front shroud and set the pan screws aside. (Fig. 12)
- 14. Carefully pull the control panel from the front shroud. Do not break any wire connections when pulling the panel from the shroud. (Fig. 12)
- 15. Remove the hole blank from the control panel and discard the blank. (Fig. 12)

- 16. Orient the switch (17) so the text on the switch is to the right side of the machine like the other switches in the control panel and insert the switch into the control panel. (Fig. 13)

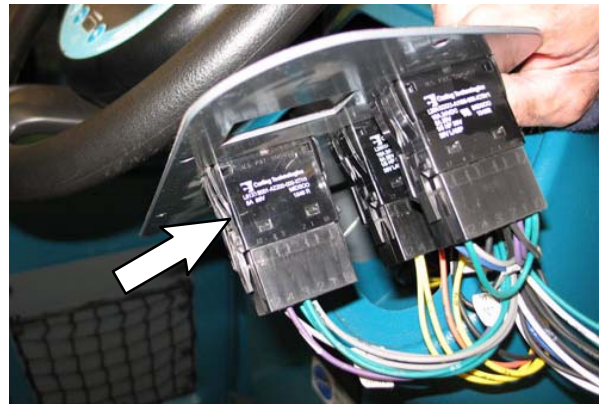


FIG. 13

- 17. Connect the main wire harness to the switch (17). (Fig. 12 / Fig. 9)
- 18. Reinstall the control panel onto the front shroud. (Fig. 12)

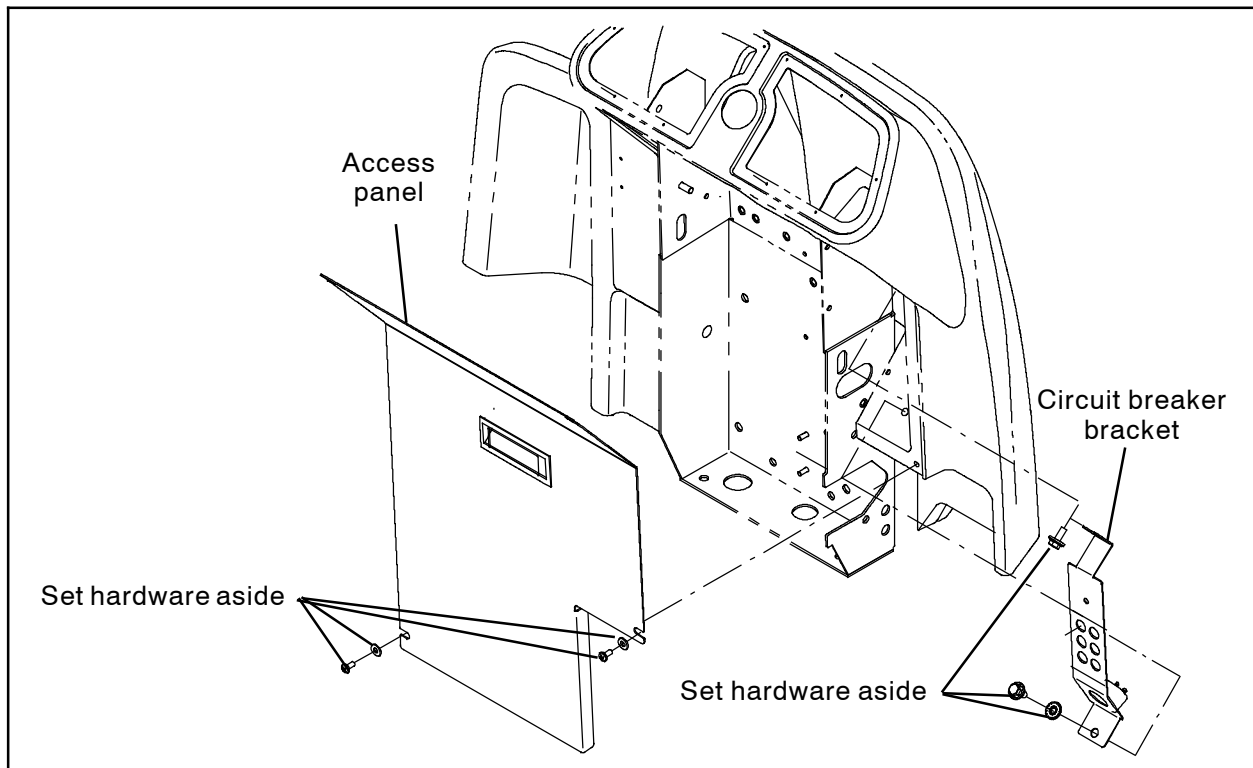


FIG. 14

19. Remove the access panel from the steering channel. Set the hardware aside. (Fig. 14)
20. Remove the M8 hex screws securing the circuit breaker bracket to the machine. Set the hardware aside. (Fig. 14)
21. Pull circuit breaker bracket out far enough to access the main wire harness connectors located behind the bracket. Do not break any connections to the other circuit breakers when pulling the bracket from the machine. (Fig. 14)
22. **Machines without front light kit option only:** Insert the 15- Amp circuit breaker (12) into circuit breaker location 11 in the circuit breaker bracket. (Fig. 15)
23. Insert the remaining 2.5 Amp circuit breaker (8) into circuit breaker location 14 in the circuit breaker bracket. (Fig. 15)
24. Connect the main wire harness to the circuit breaker(s) installed in the previous step(s). (Fig. 15 / Fig. 9)
25. Reinstall the circuit breaker bracket onto the machine. (Fig. 14)
26. Reinstall the access panel onto the steering channel. (Fig. 14)
27. Reconnect the battery cable to the machine.
28. Start and test the machine. Position the operating light / hazard light switch to the ON position and operate the machine in both the forward and reverse directions. The strobe light and red LED taillights should function when the lights are turned on and the white reverse LED lights and alarm should function when the machine is in reverse.

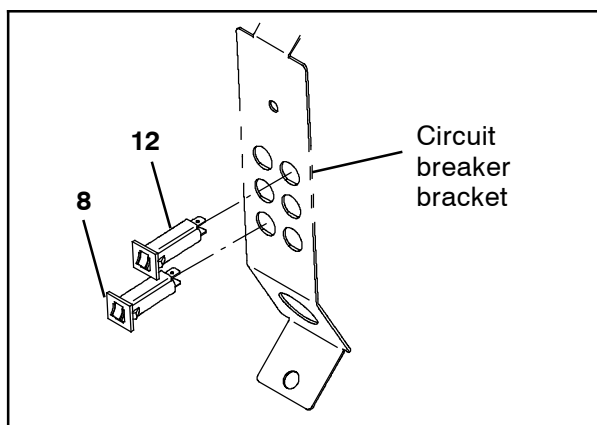


FIG. 15

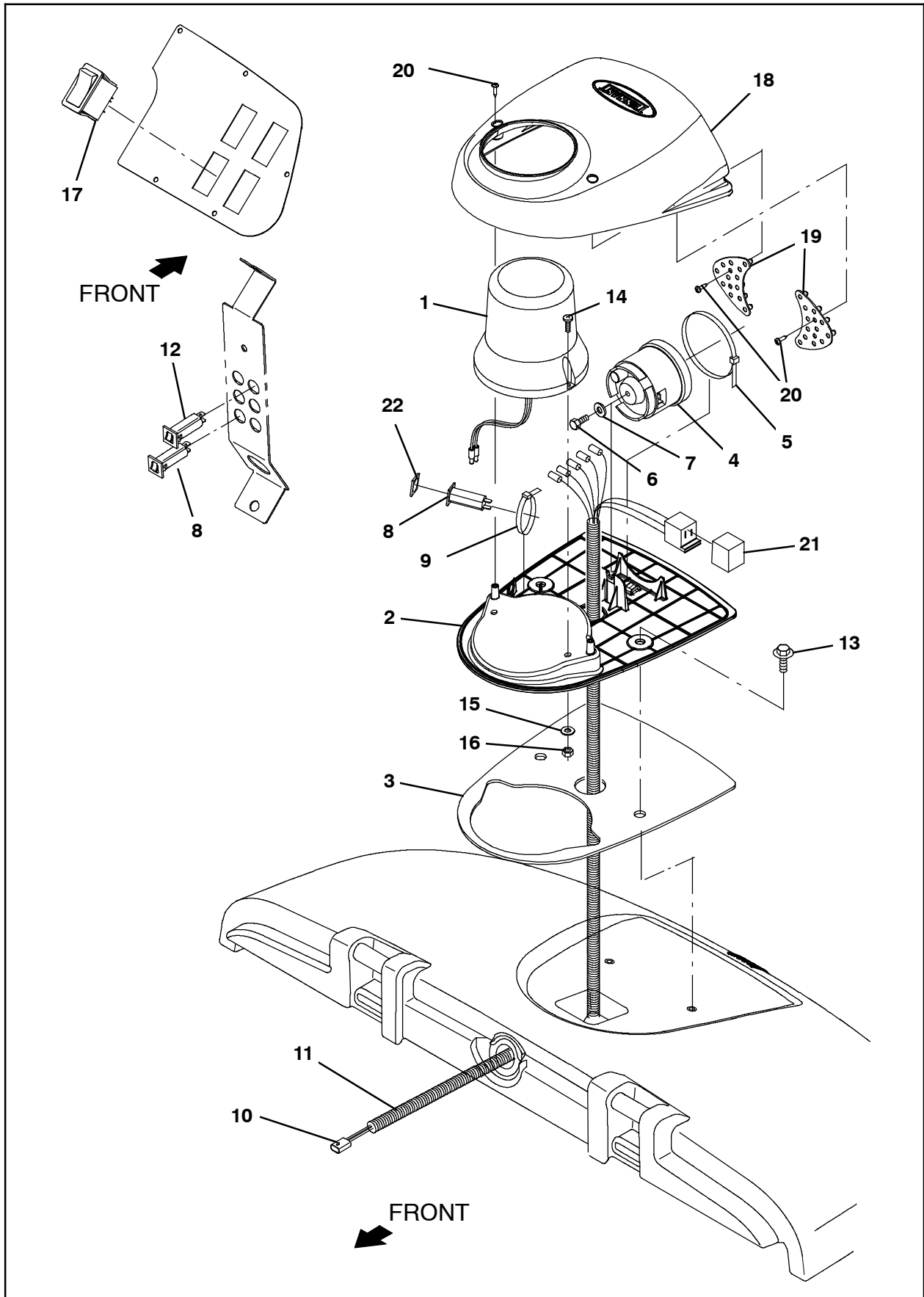


FIG. 16

Bill Of Materials For Light Kit, Strobe, Module CI [T17] - 9020109

	Ref.	Tennant Part No.	Description	Qty.
▽		9020109	Light Kit, Strobe, Module CI [T17]	1
▲▽	1	1017250	Light, Strobe, Amb, 12- 48VDC	1
▲▲		9000845	Lamp, Bulb, Strobe	1
▲▲		9000879	Lens, Amb, F/ Revl / Flasher	1
▲	2	1059938	Base, Module, Light	1
▲	3	1063263	Gasket, Base, Module	1
▲	4	1058694	Alarm, Backup, 12- 48VDC, Adj	1
▲	5	49263	Tie, Cable, Nyl, 11.4l .19w 3.0 Max D	1
▲	6	19315	Screw, Hex, .25- 20 X 0.50, G5	1
▲	7	32483	Washer, Flat, 0.25, SAE	1
▲	8	1064184	Circuit Breaker, 02.5A, Resettable	2
▲	9	49266	Tie, Cable, Nyl, 07.3l .19w 1.8 Max D	1
▲	10	1056979	Harness, Wire, Alarm / Light [T16]	1
▲	11	C080140	Sleeve, Vyl, Flex, .23ID, Bulk (6 in)	1
▲	12	1064188	Circuit Breaker, 15.0A, Resettable	1
▲	13	1020341	Screw, Hex, M8 X 1.25 X 20, SS, SEMS	2
▲	14	06933	Screw, Pan, Phl, M5 X 0.80 X 16, 4.8	2
▲	15	19066	Washer, Flat, 0.25b 0.56d .05, Pl, 10	2
▲	16	06549	Nut, Hex, Lock, M5 X 0.80, NI	2
▲	17	377084	Switch, Rocker, Prgrsv	1
▲	18	1062106	Cover, Module, Light	1
▲	19	1059342	Light Assy, Led	1
▲	20	222267	Screw, Pan, Phl, 06- 20 X 0.50, Fmg/Ab	6
▲	21	398526	Relay, 36VDC, 005A, Spdt No [Greenwich]	1
▲	22	1064191	Boot, Circuit Breaker	1

TENNANT COMPANY
P. O. Box 1452
Minneapolis, MN 55440-1452